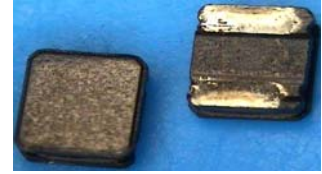


PIE3010/3015 Series

Low Profile SMD Inductors for Power Line

FEATURES

- The PIE series are characterized by low profile, low RDC to provide low loss solution.
- Miniature size for tiny portable DC toDC converter line.
- High magnetic shield construction for EMI protection.
- Flat bottom surface ensures secure, reliable mounting.
- Provided in embossed carrier tape packaging for use with automatic mounting machines.



APPLICATIONS

Low profile/ low DC resistance suitable for Portable telephones, hard disk drives, PDA, DSC and other electronic equipments.

PRODUCT IDENTIFICATION

PIE 3010 - 3R3 M - T

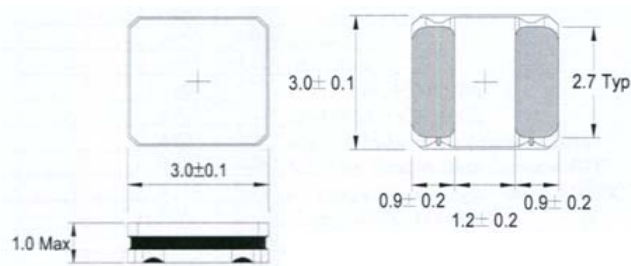
(1) (2) (3) (4) (5)

(1) Product name (2) Shapes and Dimensions (3) Inductance (3R3 : 3.3uH ; 100 : 10uH) (4) Tolerance (M : ± 20%, N: ± 30%)

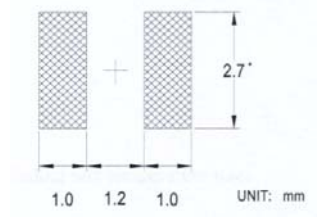
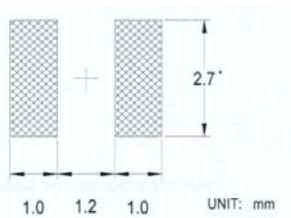
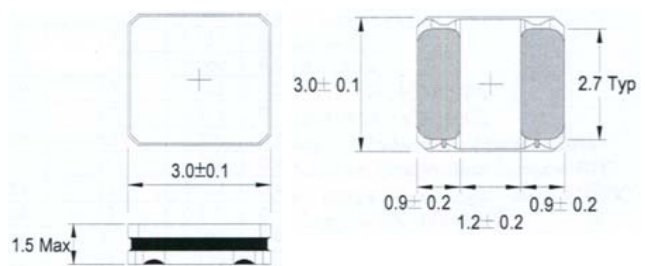
(5) Packaging style (T : taping ; None : Bulk)

DIMENSIONS AND RECOMMENDED FOOTPRINT(mm)

PIE3010 Series



PIE3015 Series



PIE3010/3015 Series

Low Profile SMD Inductors for Power Line

ELECTRICAL CHARACTERISTICS

Part Number	Inductance (μ H)/MHz	Tolerance (\pm %)	Rdc \pm 20% (Ω)	SRF (MHz/MIN)	Idc (A) Typ. L \downarrow 30%	Idc (A) Max L \downarrow 30%	Irms (A) Typ. T \uparrow 40°C
PIE3010-1R0□-T	1.0/1	N	0.065	180	1.95	1.70	1.700
PIE3010-1R5□-T	1.5/1	N	0.080	140	1.60	1.40	1.650
PIE3010-2R2□-T	2.2/1	M	0.095	100	1.45	1.25	1.450
PIE3010-3R3□-T	3.3/1	M	0.160	80	1.05	0.90	1.300
PIE3010-4R7□-T	4.7/1	M	0.190	60	0.95	0.85	1.100
PIE3010-6R8□-T	6.8/1	M	0.300	50	0.76	0.66	0.850
PIE3010-100□-T	10/1	M	0.450	45	0.61	0.53	0.720
PIE3010-150□-T	15/1	M	0.740	35	0.48	0.42	0.560
PIE3010-220□-T	22/1	M	0.980	25	0.42	0.36	0.500
PIE3010-330□-T	33/1	M	1.550	24	0.34	0.28	0.415
PIE3010-470□-T	47/1	M	2.000	19	0.27	0.24	0.320
PIE3015-1R0□-T	1.0/1	N	0.040	145	2.35	2.10	2.35
PIE3015-1R5□-T	1.5/1	N	0.055	130	2.00	1.80	2.10
PIE3015-2R2□-T	2.2/1	M	0.060	90	1.65	1.48	1.80
PIE3015-3R3□-T	3.3/1	M	0.093	75	1.40	1.21	1.60
PIE3015-4R7□-T	4.7/1	M	0.113	65	1.20	1.08	1.40
PIE3015-6R8□-T	6.8/1	M	0.176	50	1.05	0.90	1.10
PIE3015-100□-T	10/1	M	0.234	45	0.88	0.75	1.00
PIE3015-150□-T	15/1	M	0.352	33	0.68	0.58	0.80
PIE3015-220□-T	22/1	M	0.510	28	0.58	0.47	0.60
PIE3015-330□-T	33/1	M	0.799	22	0.46	0.39	0.50
PIE3015-470□-T	47/1	M	1.172	18	0.38	0.32	0.40
PIE3015-101□-T	100/1	M	2.433	11	0.27	0.23	0.29

1. When ordering, please specify tolerance and packaging codes. Ex: PIE3010-4R7M-T
Tolerance : M= \pm 20% , N = \pm 30%
Packaging : Clear tape and reel { standard }.
2. L, Idc : Agilent/HP 4284A , 1MHz with 200mV.
3. Rdc : DIGITAL MILLIOHM METER Chroma 16502, or equivalent.
4. SRF : E4991
5. Idc : Based on Inductance decrease 30%
6. Irms : Based on Temperature increase 40°C
7. Operating temperature range from -40°C to 105°C (Including self-temperature rise)
8. Storage Temp. : -40°C to +85°C
9. Recommended wire wound inductors should be used within 6 months from the time of delivery.